



Specification

DESIGN

2/3-way and 2/5-way solenoid valve

EFFECTIVE SECTION AREA

25mm²(CV=1.40)or30mm²(CV=1.68)

JOINT PIPE DIAMETER

Air inlet =Air outlet=Exhaust=1/4"
Air inlet =Air outlet=Exhaust=3/8"
Air inlet =Air outlet=Exhaust=1/2"

WORKING MEDIUM

40 micron filtered air

MOTION PATTERN

Inner guide type

WORKING-PRESSURE

0.15-0.8Mpa

MAX.PRESSURE RESISTANCE

1.2Mpa

OPERATING TEMPERATURE

5°C - +50°C

VOLTAGE RANGE

±10%

POWER CONSUMPTION

AC: 5.5W
DC: 4.8W

INSULATION &PROTECTION CLASS

H Class. IP65

WIRING FORM

Lead wire or connector type

HIGHEST ACTION FREQUENCY

5 cycles/sec

SHORTEST EXCITATION TIME

0.05 Seconds

The above information is for reference only and Eicmation reserves the right to alter without prior notice



Type:
DX/DY

Reversing solenoid valve

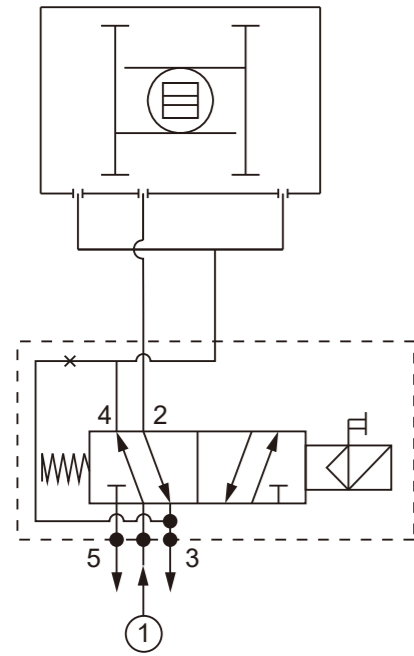
2/3-way
2/5-way

Ordering example:e.g. DX110110

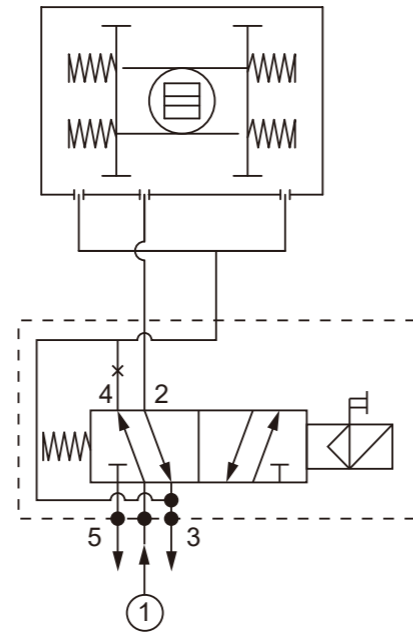
= 2-position 5-way solenoid valve,Single coil,1/4",Pipe connection,12V DC,Standard connector,1F Solenoid valve

A + B. Type	C. Enclosure	D. Caliber	E. Grade	F. Voltage	G. Connection form	H. Connection Type
DX=2/5-way solenoid valve DY=2/3-way solenoid valve	1=Single coil 2=Double coil	1=1/8" 2=1/4" 3=3/8" 4=1/2"	0=NO 1=Ex mb II T5 2=Ex ia II CT6 3=Exd II CT6	1=12V DC 2=24V DC 3=24V AC 50Hz/60Hz 4=110V AC 50Hz/60Hz 5=220V AC 50Hz/60Hz 6=380V AC 50Hz/60Hz	1=Standard connector 2=Lead wire type	0=NAMUR T=Pipe connector

Function and description

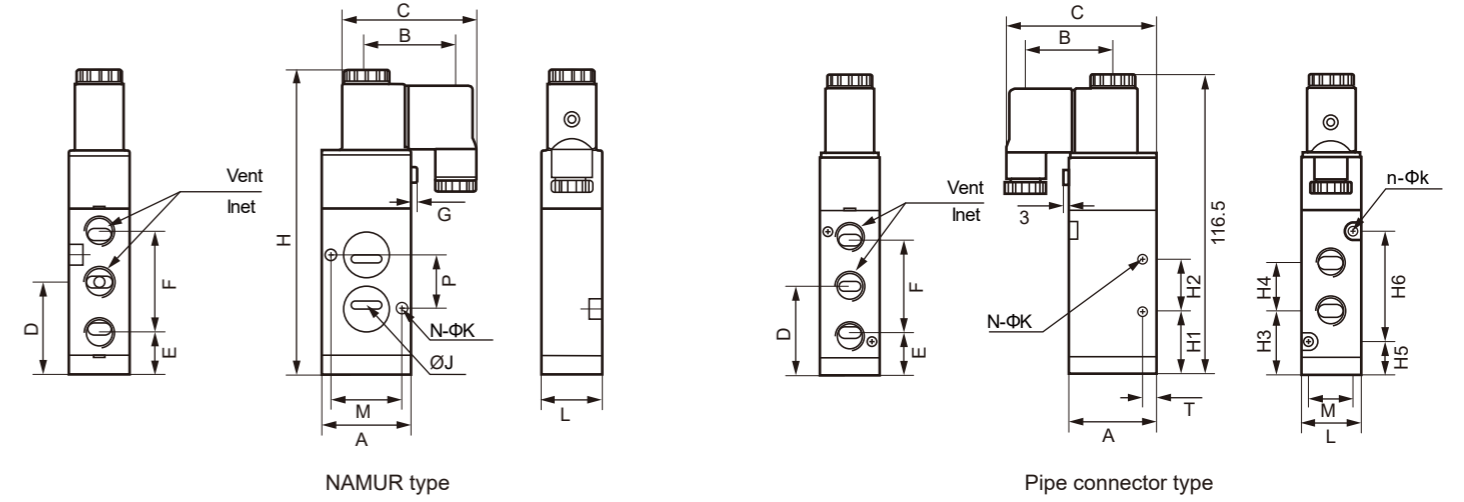
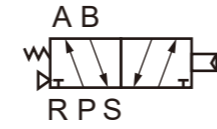


2/5-way apply to pneumatic double acting



2/3-way apply to pneumatic single acting

2/5-way solenoid valve - Single coil



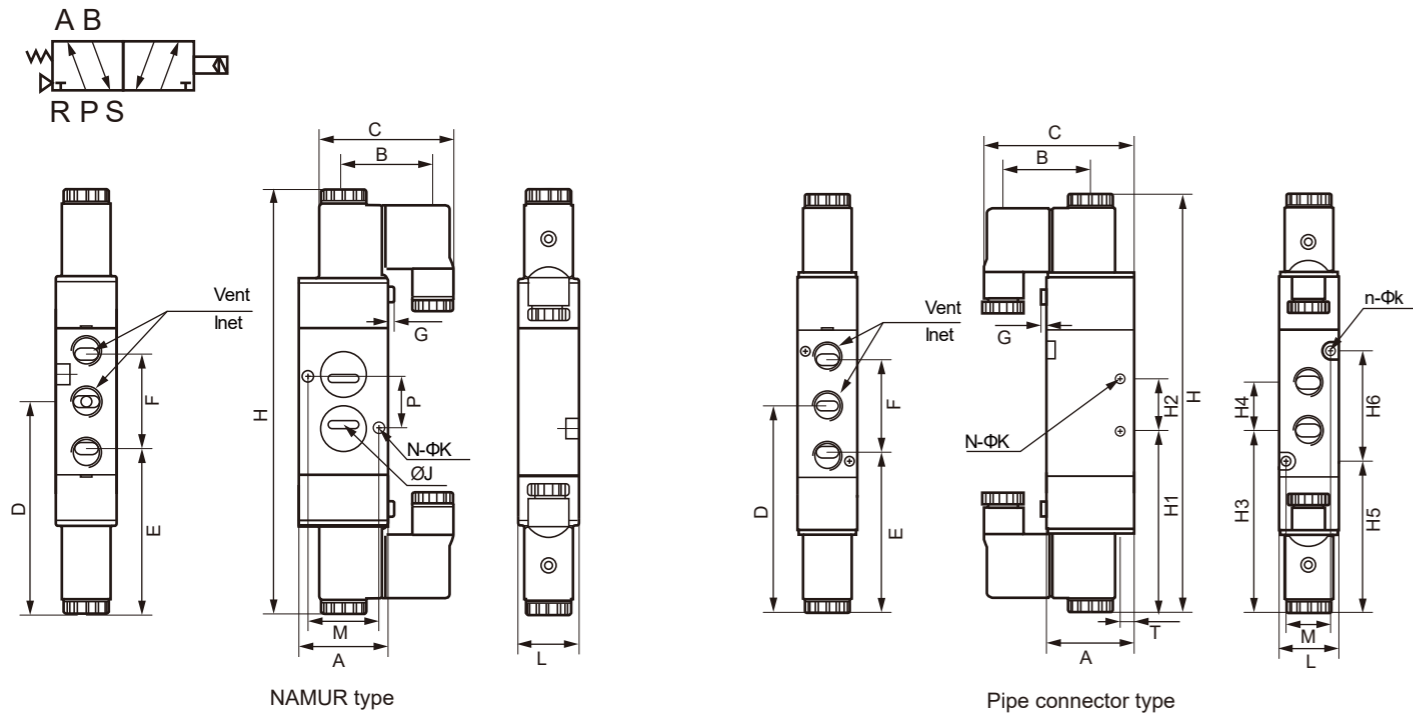
NAMUR type

SIZE	L	A	H	B	C	D	E	F	G	ØJ	N-ØK	M	P	Inet	Vent
G1/8	22	35	116.5	40	66.5	31.5	13.5	36	3	Ø18X1.4	2-Ø4.3	29	20	3-G1/8	
G1/4	27	40	134.5	40	69	40	17.5	45	2.4	Ø20X1.4	2-Ø5.5	32	24	3-G1/4	
G3/8	27	40	134.5	40	69	40	17.5	45	2.4	Ø20X1.4	2-Ø5.5	32	24	G3/8	2-G1/4
G1/2	27	55	178.5	40	76.5	57	25.5	63	3	Ø27.5X1.4	2-Ø6.5	45	40	3-G1/2	

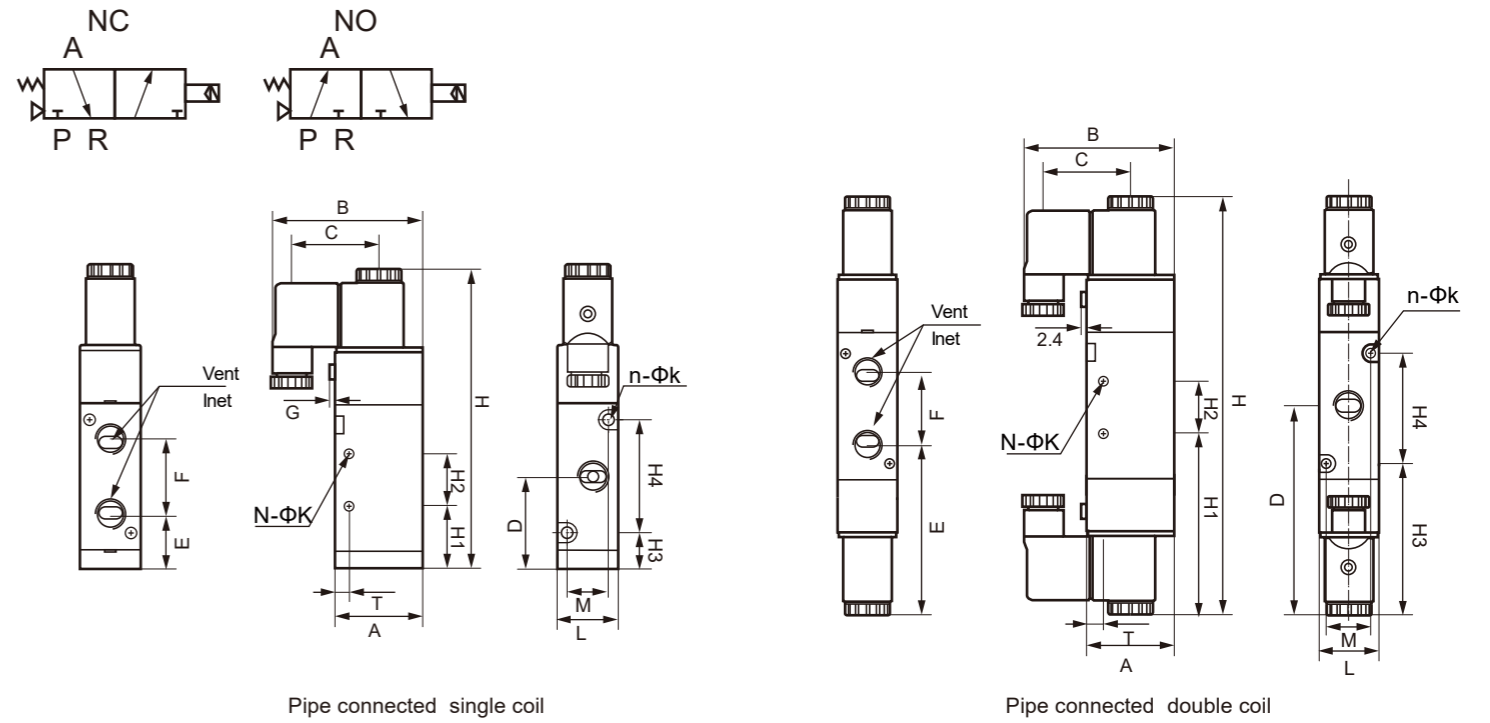
Pipe connector type

SIZE	L	A	H	B	C	D	E	F	G	N-ØK	n-Øk	H1	H2	H3	H4	H5	H6	T	M	INET	Vent
G1/8	22	35	116.5	40	66.5	31.5	13.5	36	3	2-Ø4.3	2-Ø3.2	21.5	20	22.5	18	12.5	38	7	17	5-G1/8	
G1/4	27	40	134.5	40	69	40	17.5	45	2.4	2-Ø4.3	2-Ø4.3	28	24	29	22	15	50	6.5	20	5-G1/4	
G3/8	27	40	134.5	40	69	40	17.5	45	2.4	2-Ø4.3	2-Ø4.3	28	24	29	22	15	50	6.5	20	3-G3/8	2-G1/4
G1/2	34	50	169.1	40	73.8	57	25.5	63	3	2-Ø5.5	2-Ø4.3	43	28	39	36	21	72	7.5	26	5-G1/2	

2/5-way solenoid valve - Double coil



2/3-way solenoid valve



NAMUR type

SIZE	L	A	H	B	C	D	E	F	G	ØJ	N-ØK	M	P	Inet	Vent
G1/8	22	35	169.8	40	66.5	84.9	66.9	36	3	Ø18X1.4	2-Ø4.3	29	23	3-G1/8	
G1/4	27	40	188.8	40	69	94.4	71.9	45	2.4	Ø20X1.4	2-Ø5.5	32	24	3-G1/4	
G3/8	27	40	188.8	40	69	94.4	71.9	45	2.4	Ø20X1.4	2-Ø5.5	32	24	G3/8	2-G1/4
G1/2	27	55	214.8	40	76.5	112.1	80.6	63	3	Ø27.5X1.4	2-Ø6.5	45	40	3-G1/2	

Single coil

SIZE	L	A	H	B	C	D	E	F	G	N-ØK	n-Øk	H1	H2	H3	H4	T	M	INET	Vent
G1/8	22	35	111.5	40	66.5	31	21	18	3	2-Ø3.3	2-Ø3.2	15	25	12.5	33	8	17	3-G1/8	
G1/4	27	40	119.4	40	69	32.5	20.5	24	2.4	2-Ø4.3	2-Ø4.3	17.5	30	15	35	10.5	20	3-G1/4	
G3/8	27	40	119.4	40	69	32.5	20.5	24	2.4	2-Ø4.3	2-Ø4.3	17.5	30	15	35	10.5	20	3-G3/8	
G1/2	34	50	137.6	40	73.8	41.25	25.5	31.5	3	2-Ø4.3	2-Ø4.3	15.75	51	-	-	11.5	27	3-G1/2	

Pipe connector type

SIZE	L	A	H	B	C	D	E	F	G	N-ØK	n-Øk	H1	H2	H3	H4	H5	H6	T	M	INET	Vent
G1/8	22	35	169.8	40	66.5	84.9	66.9	36	3	2-Ø4.3	2-Ø3.2	74.9	20	75.9	18	65.9	38	7	17	5-G1/8	
G1/4	27	40	188.8	40	69	94.4	71.9	45	2.4	2-Ø4.3	2-Ø4.3	82.4	24	83.4	22	69.4	50	6.5	20	5-G1/4	
G3/8	27	40	188.8	40	69	94.4	71.9	45	2.4	2-Ø4.3	2-Ø4.3	82.4	24	83.4	22	69.4	50	6.5	20	3-G3/8	2-G1/4
G1/2	34	50	224.2	40	73.8	112.1	80.6	63	3	2-Ø5.5	2-Ø4.3	98.1	28	94.1	36	76.1	72	7.5	26	5-G1/2	

Double coil

SIZE	L	A	H	B	C	D	E	F	G	N-ØK	n-Øk	H1	H2	H3	H4	T	M	INET	Vent
G1/8	22	35	165	40	66.5	84.5	74.5	18	3	2-Ø3.3	2-Ø3.2	68.4	25	66	33	8	17	3-G1/8	
G1/4	27	40	174	40	69	87	75	24	2.4	2-Ø4.3	2-Ø4.3	72	30	69.4	35	10.5	20	3-G3/8	
G3/8	27	40	174	40	69	87	75	24	2.4	2-Ø4.3	2-Ø4.3	72	30	69.4	35	10.5	20	3-G3/8	
G1/2	34	50	192.7	40	73.8	96.35	80.6	31.5	3	2-Ø4.3	2-Ø4.3	70.85	51	76.1	40.5	13.5	27	3-G1/2	