



Specification

DESIGN

The valve body has a split structure, according to 3A, DIN ,ISO, SMS standard design, material meets FDA117.2600

OPERATION

90 ° rotation of the handle, Each 10°lockable, physical indicator

CONNECTION

Welding, clamp,male thread

SURFACE TREATMENT

Internal :0.4-0.8µm
External :0.8-1.6µm

PRESSURE RANGE

PN10

TEMPERATURE RANGE

EPDM: -20°C - +120°C
FPM: -20°C - +180°C
Silicone: -20°C -+150°C

MATERIALS

Body: CF8
CF8M
Disc: F304L
F316L
Seat seal: EPDM/FPM/Silicone
Stem seal: PTFE
Shaft: Stainless steel
Seal: EPDM/FPM/Silicone
Handle: CF8

OPTIONS

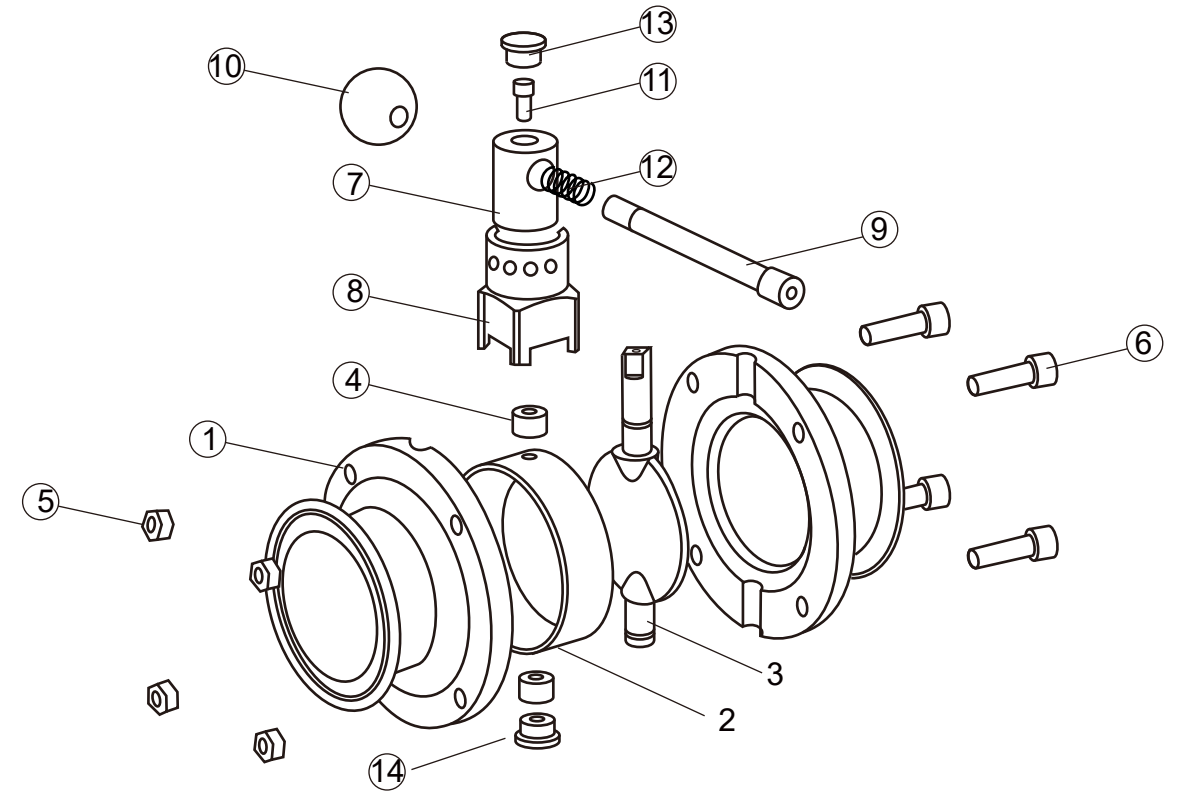
Electrical position indicator
Lengthened handle
Handwheel device

The above information is for reference only and Eicmation reserves the right to alter without prior notice



Type:
MLA/MDA
Manual sanitary butterfly valve/ISO5211 platform sanitary butterfly valve.
PN10
CF8
CF8M

Parts list



Ordering example: e.g. MLA3572218

= Sanitary butterfly valve ,CF8/F304L , EPDM, PN10, Clamp, DN50

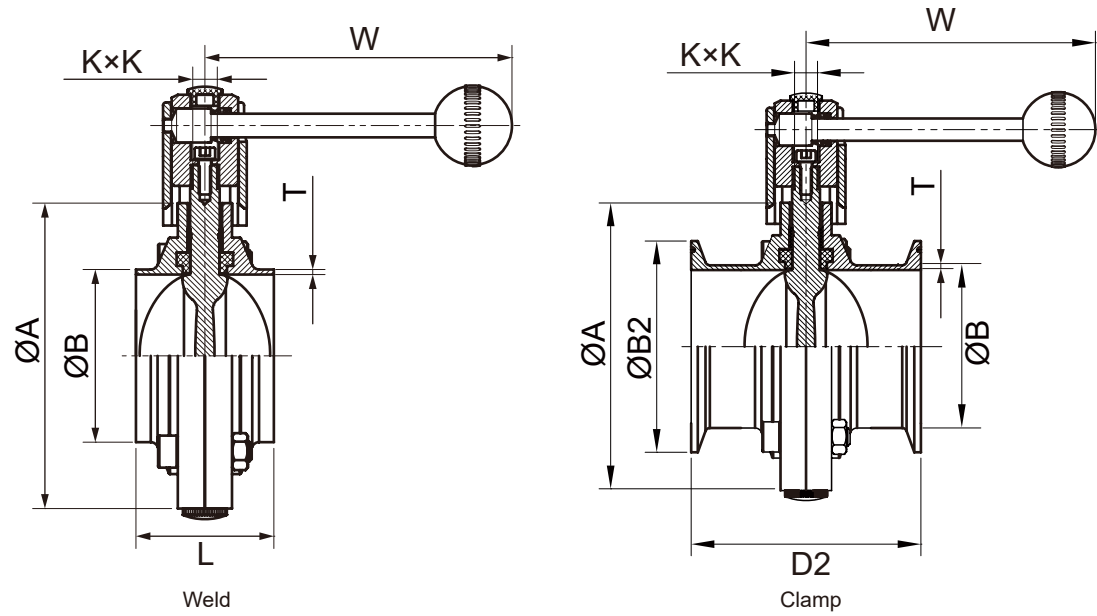
Butterfly valve

A. Type	B+C. Body/Internal	D. Sealing	E. Pressure criteria	F. Connection	G+H. Size	
MLA=Sanitary butterfly valve	35=CF8/F304L	6=FPM	2=PN10	S=Weld	12=3/8"	18=2"
valve	46=CF8M/F316L	7=EPDM		2=Clamp	13=1/2"	19=2-1/2"
MDA=ISO5211 platform sanitary butterfly valve.		E=Silicone		Y=Male thread	14=3/4"	20=3"
				X=Weld+Male thread	15=1"	21=4"
					16=1-1/4"	22=5"
					17=1-1/2"	23=6"

NO.	Description	Material
1	Valve Body	CF8
		CF8M
2	Seat Ring	Silicone
		EPDM
		FKM
3	Disc	F304L
		F316L
4	Bush	Silicone
		EPDM
		FKM
5	Het Nut	F304
6	Bolt	F304
7	Rotary Head	CF8
8	Coat	CF8
9	Draw Bar	F304
10	Handle Ball	PVC
11	Bolt	F304
12	Spring	F304
13	Plastic Plug	PVC
14	Plastic Plug	PVC

Dimension

Weld & Clamp



DIN

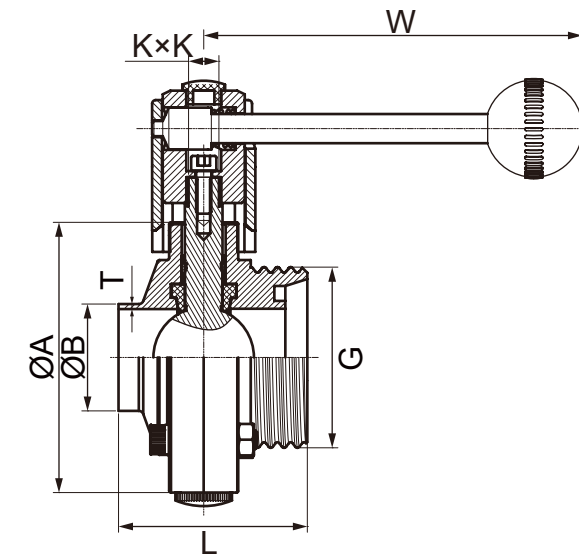
SIZE	DN	A	KxK	L	D2	B2	W	DIN11851		DIN11850-1		DIN11850-2	
								T	B	T	B	T	B
3/8"	10	78	10*10	50	-	-	136	2.5	15	1.5	12	1.5	13
1/2"	15	78	10*10	50	66	34.0	136	2.5	21	1.5	18	1.5	19
3/4"	20	78	10*10	50	66	34.0	136	2.5	25	1.5	22	1.5	23
1"	25	78	10*10	50	66	50.5	136	2.5	31	1.5	28	1.5	29
1 1/4"	32	86	10*10	50	66	50.5	136	2.5	37	1.5	34	1.5	35
1 1/2"	40	90	10*10	50	70	50.5	136	2.5	43	1.5	40	1.5	41
2"	50	106	10*10	52	76	64.0	136	2.5	55	1.5	52	1.5	53
2 1/2"	65	124	10*10	56	80	91.0	136	3.0	72	2.0	70	2.0	70
3"	80	139	10*10	58	84	106.0	163	3.0	87	2.0	85	2.0	85
4"	100	159	10*10	64	104	119.0	163	3.0	106	2.0	104	2.0	104
5"	125	186	14*14	70	113	145.0	185	3.5	132	2.0	129	2.0	129
6"	150	225	14*14	80	123	167.0	185	3.5	157	2.0	154	2.0	154

3A/SMS/ISO/IDF/DS/RJT

SIZE	DN	A	KxK	L	D2	B2	W	T				B	
								3A	SMS/ISO/IDF	DS	RJT	3A/SMS/ISO/IDF/DS	RJT
3/4"	20	78	10*10	50	66	25.2	136	1.65	1.5	1.45	1.725	19.05	19.50
1"	25	78	10*10	50	66	50.5	136	1.65	1.5	1.45	1.725	25.4	25.65
1 1/4"	32	86	10*10	50	66	50.5	136	1.65	1.5	1.45	1.725	31.8	32.05
1 1/2"	40	90	10*10	50	70	50.5	136	1.65	1.5	1.45	1.725	38.1	38.35
2"	50	106	10*10	52	76	64.0	136	1.65	1.5	1.45	1.725	50.8	51.05
2 1/2"	65	124	10*10	56	80	77.5	136	1.65	2.0	1.70	1.725	63.5	63.75
3"	80	139	10*10	58	84	91.0	163	1.65	2.0	2.20	1.725	76.2	76.45
4"	100	159	10*10	64	104	119.0	163	2.10	2.0	2.20	2.125	101.6	101.85
5"	125	186	14*14	70	113	145.0	185	2.10	2.0	2.20	2.125	127	127.25
6"	150	225	14*14	80	123	166.8	185	2.80	2.8	2.80	2.200	152.4	152.40

Dimension

Weld & Male Thread



DIN

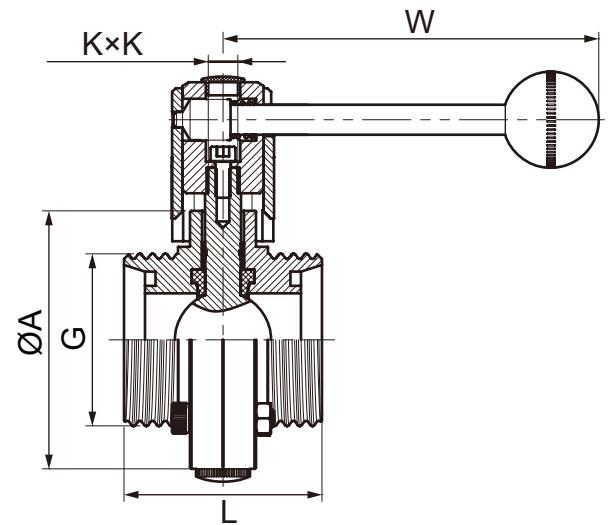
SIZE	DN	A	KxK	L	G	W	T	B	
								DIN11850-1	DIN11850-2
3/8"	10	78	10*10	50	RD28*1/8	136	1.5	12	13
1/2"	15	78	10*10	50	RD34*1/8	136	1.5	18	19
3/4"	20	78	10*10	50	RD44*1/6	136	1.5	22	23
1"	25	78	10*10	50	RD52*1/6	136	1.5	28	29
1 1/4"	32	86	10*10	50	RD58*1/6	136	1.5	34	35
1 1/2"	40	90	10*10	50	RD65*1/6	136	1.5	40	41
2"	50	106	10*10	52	RD78*1/6	136	1.5	52	53
2 1/2"	65	124	10*10	56	RD95*1/6	136	2.0	70	70
3"	80	139	10*10	58	RD110*1/4	163	2.0	85	85
4"	100	159	10*10	64	RD130*1/4	163	2.0	104	104

3A/SMS/ISO/IDF/DS/RJT

SIZE	DN	A	KxK	L	G					W	T	B		
					3A	SMS	ISO/IDF	DS	RJT			3A/SMS/ISO/IDF/DS	RJT	
3/4"	20	78	10*10	50	-	RD36*1/8	-	-	-	-	136	1.5	19.05	-
1"	25	78	10*10	50	37.13*1/8 TACME	RD40*1/6	37.1*1/8 TACME	RD44*1/6	45.7*1/8 TWHIT	-	136	1.5	25.4	25.65
1 1/4"	32	86	10*10	50	-	RD48*1/6	-	RD52*1/6	-	-	136	1.5	31.8	-
1 1/2"	40	90	10*10	50	50.65*1/8 TACME	RD60*1/6	50.6*1/8 TACME	RD58*1/6	58.4*1/8 TWHIT	-	136	1.5	38.1	38.35
2"	50	106	10*10	52	64.17*1/8 TACME	RD70*1/6	64.1*1/8 TACME	RD72*1/6	72.7*1/6 TWHIT	-	136	1.5	50.8	51.05
2 1/2"	65	124	10*10	56	77.67*1/8 TACME	RD85*1/6	77.6*1/8 TACME	RD88*1/6	85.4*1/6 TWHIT	-	136	2.0	63.5	63.75
3"	80	139	10*10	58	91.19*1/8 TACME	RD98*1/6	91.1*1/8 TACME	RD100*1/6	98.1*1/6 TWHIT	-	163	2.0	76.2	76.45
4"	100	159	10*10	64	119.25*1/6 TACME	RD125*1/4	118.2*1/8 TACME	RD130*1/6	123.5*1/6 TWHIT	-	163	2.0	101.6	101.85

Dimension

Male Thread



DIN

SIZE	DN	A	K*K	L	G						W
					DIN	3A	SMS	ISO/IDF	DS	RJT	
3/8"	10	78	10*10	66	RD28*1/8	-	-	-	-	-	136
1/2"	15	78	10*10	66	RD34*1/8	-	-	-	-	-	136
3/4"	20	78	10*10	66	RD44*1/6	-	RD36*1/8	-	-	-	136
1"	25	78	10*10	66	RD52*1/6	37.13*1/8 TACME	RD40*1/6	37.1*1/8 TACME	RD44*1/6	45.7*1/8 TWHIT	136
1 1/4"	32	86	10*10	66	RD58*1/6	-	RD48*1/6	-	RD52*1/6	-	136
1 1/2"	40	90	10*10	70	RD65*1/6	50.65*1/8 TACME	RD60*1/6	50.6*1/8 TACME	RD58*1/6	58.4*1/8 TWHIT	136
2"	50	106	10*10	76	RD78*1/6	64.17*1/8 TACME	RD70*1/6	64.1*1/8 TACME	RD72*1/6	72.7*1/6 TWHIT	136
2 1/2"	65	124	10*10	80	RD95*1/6	77.67*1/8 TACME	RD85*1/6	77.6*1/8 TACME	RD88*1/6	85.4*1/6 TWHIT	136
3"	80	139	10*10	84	RD110*1/4	91.19*1/8 TACME	RD98*1/6	91.1*1/8 TACME	RD100*1/6	98.1*1/6 TWHIT	163
4"	100	159	10*10	104	RD130*1/4	119.25*1/6 TACME	RD125*1/4	118.2*1/8 TACME	RD130*1/6	123.5*1/6 TWHIT	163
5"	125	186	14*14	130	RD160*1/4	-	-	-	-	-	185
6"	150	225	14*14	150	RD190*1/4	-	-	-	-	-	185

Specification

DESIGN

The valve body has a split structure, according to 3A, DIN, ISO, SMS standard design, material meets FDA117.2600

OPERATION

Pneumatic double-acting or single-acting

CONNECTION

Welding, Clamps, Male thread

SURFACE TREATMENT

Internal :0.4-0.8µm
External :0.8-1.6µm

PRESSURE RANGE

PN10

TEMPERATURE RANGE

EPDM: -20°C - +120°C
FPM: -20°C - +180°C
Silicone: -20°C - +150°C

MATERIALS

Body: CF8
CF8M
Disc: F304L
F316L
Seat seal: EPDM/FPM/Silicone
Stem seal: PTFE
Shaft: Stainless steel
Seal: EPDM/FPM/Silicone

EXTERNAL TEMPERATURE RANGE

-20°C - +70°C

PILOT MEDIA

Filtered gases (oil, ash and water removal)

OPTIONS

3/2-ways or 5/2-ways valve, limit switch, positioner, filter reducer, manual clutch

The above information is for reference only and Eicmation reserves the right to alter without prior notice

For further specifications please refer to the butterfly valve (MDA) and actuator (PA) data sheet



Type:
MDA-PA
Pneumatic sanitary
butterfly valve
PN10

CF8
CF8M

Ordering example:

e.g. MDA3572218-PA1114110
= ISO5211 platform Sanitary butterfly valve, CF8/F304L, EPDM, PN10, Clamp, DN50, Pneumatic actuator, Double action, Anodising aluminum, Ø63mm, NBR, Gear, 0°-90° Butterfly valve.

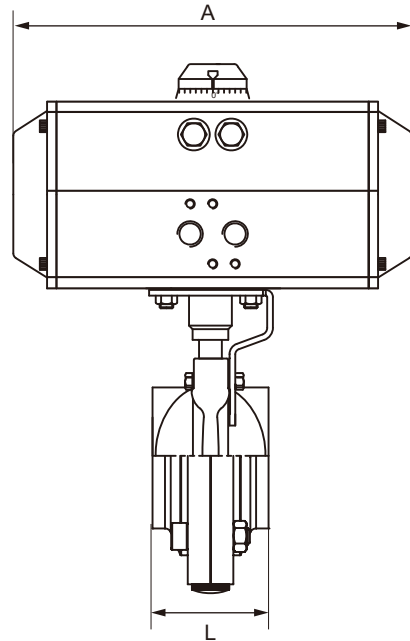
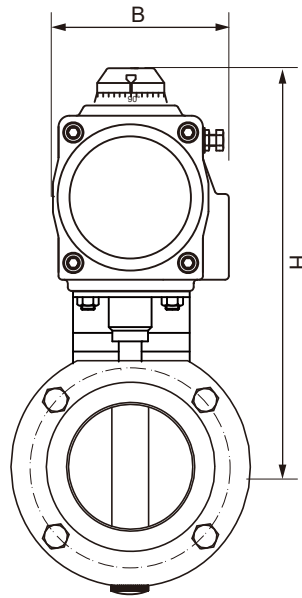
A. Type	B+C. Body/Internal	D. Sealing	E. Pressure criteria	F. Connection	G+H. Size
MDA=ISO5211 platform Sanitary butterfly valve	35=CF8/F304L 46=CF8M/F316L	6=FPM 7=EPDM E=Silicone	2=PN10	S=Weld 2=Clamp Y=Male thread X=Weld+Male thread	12=3/8" 13=1/2" 14=3/4" 15=1" 16=1-1/4" 17=1-1/2" 18=2" 19=2-1/2" 20=3" 21=4" 22=5" 23=6"

Actuator

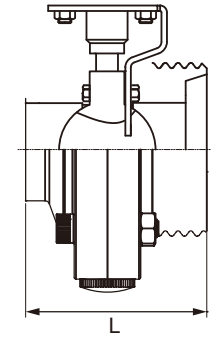
I. Type	J. Fail position	K. Material	L + M. Size	N. Seal	O. Structure	P. Trip
PA=Pneumatic actuator	1=Double action 2=Single action-close 3=Single action-open	1=Aluminium alloy 2=Stainless steel	13=Ø52 14=Ø63 15=Ø75 16=Ø83 17=Ø92 18=Ø105 19=Ø125 20=Ø140 21=Ø160	1=NBR 2=HNBR 3=FKM	1=Gear	0=0-90° 1=0-120° 2=0-135° 3=0-150° 4=0-180° 5=0-270°

Dimension

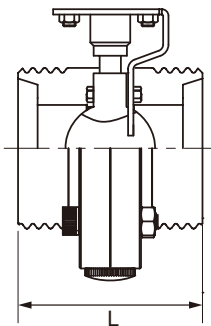
Weld & Clamp/Weld & Thread/Male Thread



Weld & Clamp



Weld & Thread



Male Thread

SIZE	DN	L				Actuator		A	B	H
		Weld	Clamp	Weld&Thread	Thread	Model	Size			
3/8"	10	50	-	50	66	PA1113110	Ø52	147	72	179.5
						PA2114110	Ø63	172	83	195.5
1/2"	15	50	66	50	66	PA1113110	Ø52	147	72	179.5
						PA2114110	Ø63	172	83	195.5
3/4"	20	50	66	50	66	PA1113110	Ø52	147	72	179.5
						PA2114110	Ø63	172	83	195.5
1"	25	50	66	50	66	PA1113110	Ø52	147	72	179.5
						PA2114110	Ø63	172	83	195.5
1 1/4"	32	50	66	50	66	PA1114110	Ø63	172	83	195.5
						PA2114110	Ø63	172	83	195.5
						PA2114110	Ø63	172	83	195.5
1 1/2"	40	50	70	50	70	PA1114110	Ø63	172	83	199
						PA2114110	Ø63	172	83	199
2"	50	52	76	52	76	PA1114110	Ø63	172	83	205
						PA2115110	Ø75	184	95	217
2 1/2"	65	56	80	56	80	PA1115110	Ø75	184	95	222
						PA2116110	Ø83	204	103	231
						PA2116110	Ø83	204	103	242
3"	80	58	84	58	84	PA1116110	Ø83	204	103	242
						PA2116110	Ø83	204	103	242
4"	100	64	104	64	104	PA1116110	Ø83	204	103	264
						PA2117110	Ø92	262	109	272
5"	125	70	113	70	130	PA1117110	Ø92	262	109	282
						PA2118110	Ø105	268	121	298
						PA1117110	Ø92	262	109	312
6"	150	80	123	80	50	PA2118110	Ø105	268	121	328
						PA2118110	Ø105	268	121	328

Note: Details please refer to MLA/MDA Sanitary butterfly valve/ ISO5211 platform sanitary butterfly valve.

Above information is under normal working condition,

Please consult the technical department in case of special working conditions

Specification

DESIGN

The valve body has a split structure, according to 3A,DIN,ISO,SMS standard design, material meets FDA117.2600

OPERATION

Electric with handle operation

CONNECTION

Welding, Clamp, Male thread

SURFACE TREATMENT

Internal :0.4-0.8µm
External :0.8-1.6µm

PRESSURE RANGE

PN10

TEMPERATURE RANGE

EPDM: -20°C - +120°C
FPM: -20°C - +180°C
Silicone: -20°C - +150°C

MATERIALS

Body: CF8
CF8M

Disc: CF8
CF8M

Seat seal: EPDM/FPM/Silicone

Stem seal: PTFE

Shaft: Stainless steel

Seal: EPDM/FPM/Silicone

EXTERNAL TEMPERATURE RANGE

-20°C - +60°C

OPTIONAL VOLTAGE

24V DC, 24V AC, 110V AC, 220V AC, 380V AC

PROTECTION

IP 67

STANDARD EQUIPMENT

2 additional limit switches, optical position indicator, manual override

OPTIONS

Potentiometer modulate type 4-20mA
Exd IIB T4

For more requests please contact us

For further specifications please refer to the butterfly valve (MDA) and actuator (KL) data sheet

The above information is for reference only and Eicmation reserves the right to alter without prior notice



Type:
MDA-KL
Electric Sanitary Butterfly Valve
PN10

CF8
CF8M

Ordering example: e.g. MDA4472K18-KL411111

= ISO5211 platform Sanitary butterfly valve, CF8M/CF8M, EPDM, PN10, Clamp, DN50, 220V AC, Electric actuator 50Nm, Explosion proof grade IP67, On/Off+dry contact

Butterfly valve

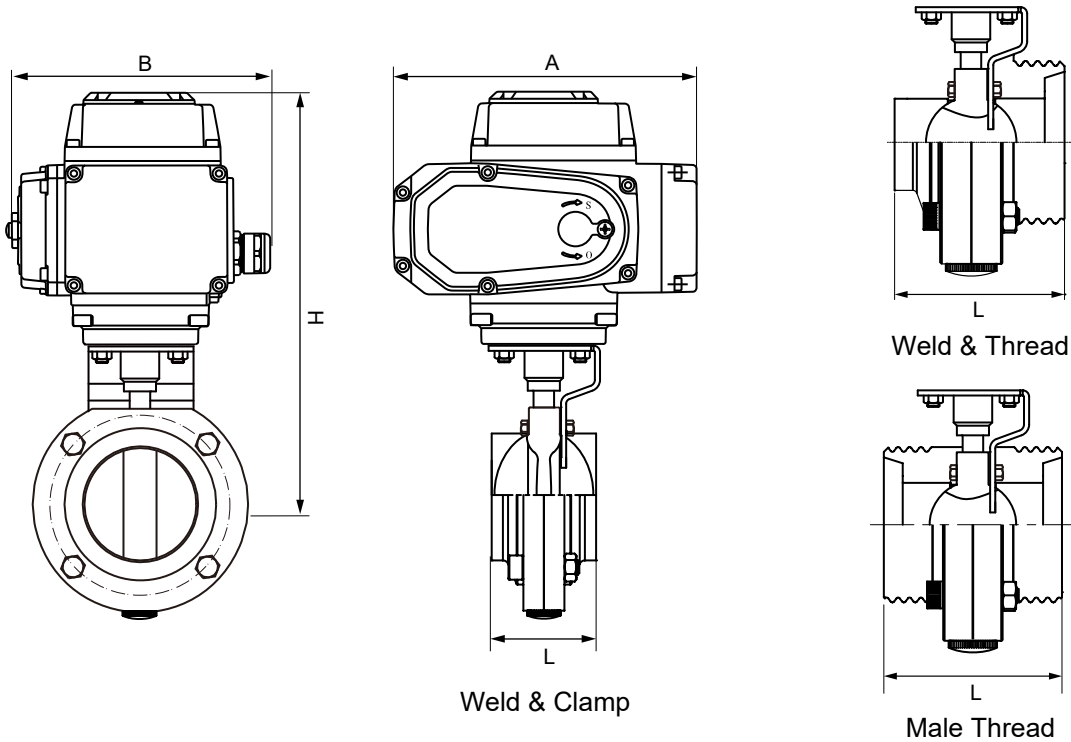
A. Type	B+C. Body/Internal	D. Sealing	E. Pressure criteria	F. Connection	G+H. Size
MDA=ISO5211 platform Sanitary butterfly valve	33=CF8/CF8 44=CF8M/CF8M	6=FPM 7=EPDM E=Silicone	2=PN10	S=Weld K=Clamp Y=Male thread X=Weld+Male threa	12=3/8" 13=1/2" 14=3/4" 15=1" 16=1-1/4" 17=1-1/2" 18=2" 19=2-1/2" 20=3" 21=4" 22=5" 23=6"

Actuator

I. Type	J. Voltage	K. Explosion proof grade	L+M. Torque(NM)	N. Extra	O. Spare
KL=Basic angle stroke Electric actuator	1=24V DC 2=24V AC 3=110V AC 4=220V AC 5=380V AC	1=IP67 2=IP68 3=Exd II BT4 (50-600NM)	11=50 13=100 15=200 17=400 19=600 21=1000 23=2000	1=On/Off type +dry contact 2=Modulate type 4~20mA	1=No 2=1K~10K potentiometer 3=Current position sensor 4~20mA 4=Overload protection (200-2000NM) 8=Arefaction protect

Dimension

Weld & Clamp/Weld & Thread/Male Thread



SIZE	DN	L				Actuator		A	B	H
		Weld	Clamp	Weld&Thread	Thread	Model	Torque(NM)			
3/8"	10	50	-	50	66	KL111111	50	165.0	140.5	215
						KL121111	50	170.5	121	227.5
1/2"	15	50	66	50	66	KL111111	50	165.0	140.5	215
						KL121111	50	170.5	121	227.5
3/4"	20	50	66	50	66	KL111111	50	165.0	140.5	215
						KL121111	50	170.5	121	227.5
1"	25	50	66	50	66	KL111111	50	165.0	140.5	215
						KL121111	50	170.5	121	227.5
1 1/4"	32	50	66	50	66	KL111111	50	165.0	140.5	215
						KL121111	50	170.5	121	227.5
1 1/2"	40	50	70	50	70	KL111111	50	165.0	140.5	218.5
						KL121111	50	170.5	121	231
2"	50	52	76	52	76	KL111111	50	165.0	140.5	224.5
						KL121111	50	170.5	121	237
2 1/2"	65	56	80	56	80	KL111111	50	165.0	140.5	229.5
						KL121111	50	170.5	121	242
3"	80	58	84	58	84	KL111311	100	211.5	154	271.5
						KL121311	100	217.5	139	285
4"	100	64	104	64	104	KL111311	100	211.5	154	293.5
						KL121311	100	217.5	139	307
5"	125	70	113	70	130	KL111311	100	211.5	154	303.5
						KL121311	100	217.5	139	317
6"	150	80	123	80	50	KL111311	100	211.5	154	333.5
						KL121311	100	217.5	139	347

Note: Details please refer to MLA/MDA Sanitary butterfly valve/
ISO5211 platform sanitary butterfly valve.

Above information is under normal working condition,

Please consult the technical department in case of special working conditions